



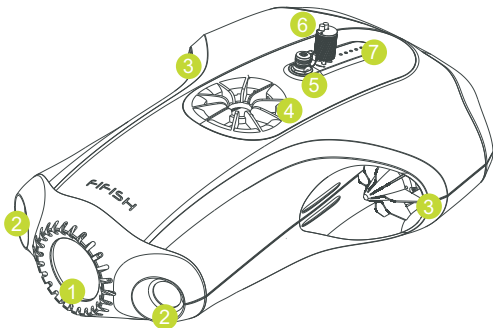
Quick Start and Maintenance Guide

V 1.2



First Sight

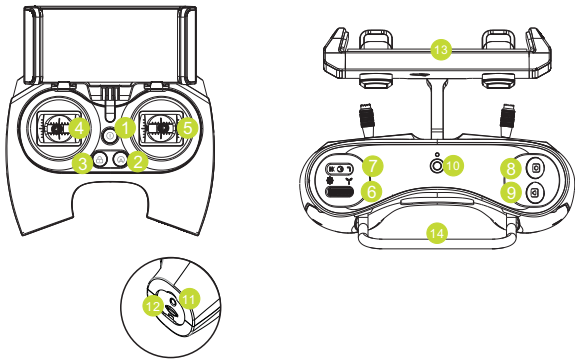
FIFISH P3 is capable of diving to 100 meters (330 feet) depth, both functional in fresh and sea water. There are 3 powerful thrusters (2 horizontal, 1 vertical), which allow P3 moving in 6 directions: forward, backward, left, right, up and down. P3 featured auto holding at movement and speed. P3 offers 4K Ultra-High-Definition (UHD) video and 20 Megapixel high resolution pictures with its' 1 inch CMOS sensor, 162°(FOV in air) ultra-wide-angle lens, and 2 powerful LEDs (total 4,000 lumens).



- | | | |
|---------------------|----------------------|------------------------|
| 1.Camera | 2.LEDs | 3.Horizontal Thrusters |
| 4.Vertical Thruster | 5.Tether Plug | |
| 6.Anchor Socket | 7.Battery Indicators | |

Remote Controller(RC)

P3 remote controller(RC) functions include, control movements, speed mode, lighting brightness, auto holding, unlock/lock the thrusters, take pictures and record videos.



- 1.Power ON/OFF 2.Auto Holding 3.Thrusters UNLOCK/LOCK
- 4.Left Stick 5.Right Stick 6.LED Brightness Roller
- 7.Speed Mode Switch 8.Capture Photo 9.Record Video
- 10.Tether Socket 11.Battery Charging Socket
- 12.Micro SD Card Socket 13.Smart Device Bracket 14.Handle

Tether and Reel

The reel can roll 200 meters (~660 feet) neutral buoyancy tether.



1. Drone Plug 2. Tether Anchor 3. Neutral Buoyancy Tether
4. Remote Controller Plug 5. Reel

Operating FIFISH P3

1. Install the FIFISH APP

Option 1. Scan the QR code down below with your smart devices for the FIFISH APP installation.

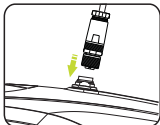


Option 2. Search the "FIFISH" on App Store (iOS), GooglePlay (Android).

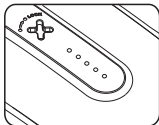
Option 3. Go to our website for download <https://www.qysea.com/support/appdownload>

2. Battery Checking

The drone's battery



Connecting drone with tether plug



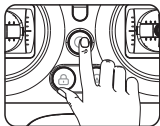
Drone will auto start and indicate the battery level



Low...Medium...High

There are 5 LED indicators

The RC's battery



White: 70% or up



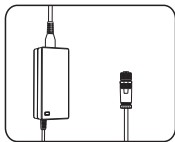
Yellow: 30 to 70%



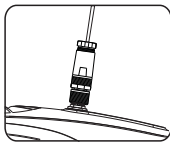
Red: 30% or less

Press the Power ON/OFF, battery level will be indicated by color.

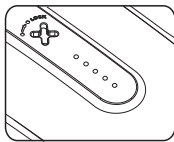
3.Charging



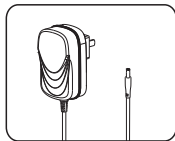
Power adaptor (the drone)



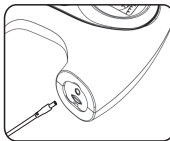
The drone's tether socket can be used for either data transferring or charging



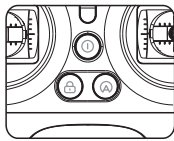
All 5 LEDs indicators is on means the drone is fully charged



Power adaptor (RC)



Plug in (RC)



The Power ON/OFF shows white light is constantly on means the RC is fully charged

4.Getting Ready

4.1.Turn ON the RC

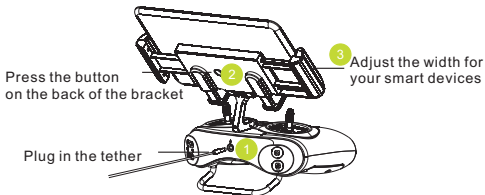


Unfold the Bracket



Press and hold for 3 second on the Power ON/OFF until the music is playing

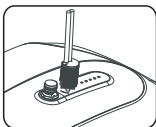
1.The 3 button (in the center) will flash one by another and rotate in clock-wise, which means the RC's is ready to be connected.



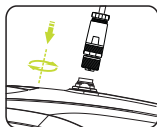
4.2.Turn ON the drone



Take off the protective cap
(Keep the plug clean and dry)



Insert the tether anchor,
push and twist 45° until
locked



Plug in the tether and twist
the screw cap, then the
drone will turn on

Note:

1. When you plug in the tether, the drone is ON followed by ringtone. Remote Controller and P3 is connected, when the Power On/OFF and UNLOCK/LOCK indicators are steady.
2. You can unscrew the cap and pull out the tether to turn off the drone.
3. Please keep the drone plug dry and clean, otherwise, the drone is not able to be turned off. The moisture will cause corrosion on the connector. You can clean the plug with running fresh water and dry with cotton pad or tissue paper.

4.3. Connect with the FIFISH APP

Connect your smart device to the remote controller's (RC's) Wi-Fi.



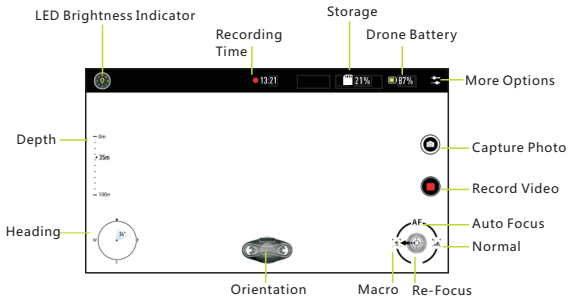
Network: FIFISH RC_XXX
Password: 1234567890



Open the FIFISH APP ,
press the "CONNECT"



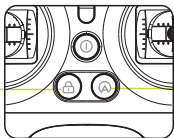
Press the "GO DIVE" then
the LIVE-Streaming is on



5. RC's function

For safety, the thrusters MUST be locked in the air .You can unlock it inside the water

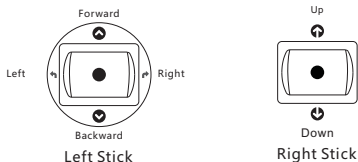
Push Thrusters UNLOCK/LOCK
Light on, LOCKED
Light off, UNLOCKED



Auto Holding,
Press the AUTO to
turn on and off the Auto Holding Mode

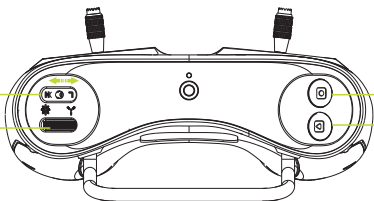
Light on, Auto is on
Light off, Auto is off

Movement Control



Speed Mode Switch
(Low and high speed)

LED Brightness roller
(8 level brightness)



Capture Photo

Record Video

6.Copy Video and Pictures

We provide introduction for exporting the original 4K high definition video and pictures from the drone. The detailed introduction can be find on our website.
www.qysea.com/support/manual/



Attention:

Navigation knowledge is very important for you, P3 and environmental safety!
Please read the Disclaimer and Safety Operation Guide first before your dive.

Maintenance Guide

1. Soaking and rinsing the drone with fresh water, keep it air dry and avoid direct sunlight. Make sure the tether plug is clean and dry, screw on the protective cap.
2. Check the propellers after every dive (make sure there are NOT any entanglement, such as, seaweed).
3. Soaking and rinsing the tether (anchor, especially the plugs) with fresh water, keep it air dry and avoid direct sunlight.
4. Check the tether on regular basis, replace the tether if there is a break or wearing badly.
5. For batteries safety, it is recommended to store the drone in dry and cool environment, the temperature range is 5 to 25°C (41 to 77°F).
6. For long term storage, it is recommended to maintain 50% to 60% of battery level, and recharge and discharge every 90 days.
7. Sand cleaning, it is recommended to soak the drone into the clean fresh water and shake it in tail up or head up position (let the sand dropping out from the holes).
8. Due to the temperature difference between glasses, the condensation may cause the "foggy" issue on lens. This fog will not affect the internal electric part of the camera. You can turn off the drone and bring it to room temperature, the "foggy" issue will disappear within 1 hour.